

discoveries

Join Us for the Walk to Cure Diabetes

Madison

Sunday, Sept. 26 at Warner Park

Eau Claire

Sunday, Sept. 12 at Carson Park

La Crosse

Sunday, Oct. 3 at Myrick Park

WALK TO CURE DIABETES

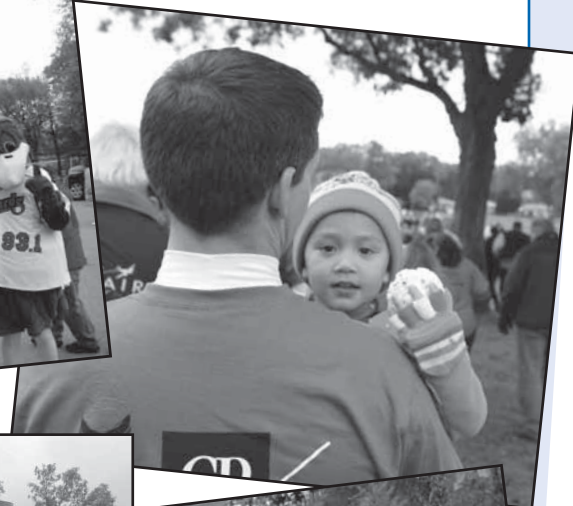
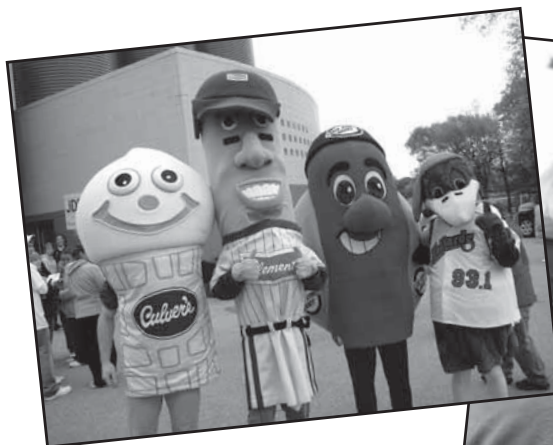
JDRF Juvenile Diabetes Research Foundation International

dedicated to finding a cure

JDRF Walks are fun and family-friendly, featuring plenty of entertainment, food and kids activities. Choose from one of our three locations in Western Wisconsin and join efforts with thousands of people who want to make a difference in the lives of those living with type 1 diabetes. By participating in the Walk to Cure Diabetes, you can support JDRF-funded research that will help people with this disease look forward to longer, healthier lives.

Special thanks to Kim Sponem, president of Summit Credit Union, for serving as the corporate chair for the Madison Walk. With her leadership in Madison and amazing volunteer support in Eau Claire and La Crosse, the Western Wisconsin Chapter hopes to surpass its goal of raising \$425,000 for diabetes research.

Take your first step – visit www.walk.jdrf.org and register today.



Message From the Chapter President

Dear Friends,

As we all know, the recent recession has provided more than its share of challenges and uncertainty. But even in a difficult economy, JDRF was able to



Bobbi Howell

fund \$101 million in research in FY09 – only the sixth time in our history that we passed the \$100 million mark in research support. Fortunately for everyone waiting for a cure, JDRF revenue

increased in FY10 and we anticipate funding \$107 million in diabetes research. Thanks to your support and hard work, the Western Wisconsin Chapter has also seen an increase in fundraising, raising nearly \$950,000 in FY10, a 7 percent increase from last year.

JDRF was founded 40 years ago by parents of children with type 1 diabetes. Today, volunteers remain the driving force behind our progress toward a cure. We need you to help fulfill our ambitious agenda of fundraising and advocacy activities.

In an era of economic challenges, you can still be a crucial part of JDRF with your time and talents. A commitment of only a few hours a week from supporters like you goes a long way toward meeting our Chapter's many needs. We would love to have your assistance in any one of the following areas:

- Walk, Ride and Gala planning committees
- PR and media outreach
- Corporate Development committee
- Spend a few hours each week in the Chapter office helping with clerical duties
- Major Gifts cultivation
- Organize a fun outing for our type 1 diabetes families
- Advocacy activities
- Serve on the Board of Directors and help shape the future of our chapter

(continued on page 8)

Ride to Cure Diabetes

Team Western Wisconsin is thrilled to have 68 people participating in the 2010 Ride to Cure Diabetes – both in La Crosse, Wisc., and Death Valley, Calif.

The JDRF Ride to Cure Diabetes is an adventure of a lifetime. Riders from around the world take on two challenges: raising the critical money needed to fund the research that will cure diabetes, and reaching a personal training goal that will prepare them for their destination cycling experience. Participants spend the weeks before the Ride working with a USA Cycling certified coach and a JDRF fundraising coach to help them reach their goals.

Members of Team Western Wisconsin, led by coaches Joe Brady and Jeanne Grist, include:

- | | | |
|-----------------|-------------------|-------------------------|
| Beth Baker | Jeremy Gosch | Daniel Merritt |
| Michael Baker | Kathleen Graham | Craig Midtlien |
| John Bass | Andrew Graham | Joe Miller |
| Patti Batt | Colin Grist | Jody Montgomery |
| Laura Bauer | Toni Herkert | Kimberly Novak |
| Charles Brausen | Marc Heuer | Chuck Oldenburg |
| Sean Busby | Chris Howell | Lisa Oxton |
| Joy Carr | Cindy Johnson | Michelle Page-Alswager |
| Dan Carstensen | Harvey Johnson | Michelle Reddington |
| Jill Carstensen | Gerald Jorgenson | Chris Rotert |
| Stacy Cook | Keith Keil | Nate Saxe |
| Dave Dahler | Nancy Keil | Jeremy Scherbert |
| Deb Davis | Shana Kellum | Mark Schiebler |
| Amy Eager | Liz Kennebeck | Mollie Shambeau |
| Prentice Eager | Dan Klecker | Tom Sheahan |
| Steve Eager | Scott Klicko | Jeff Steuer |
| Anne Findlay | MaryAnn Knudsen | Christopher Strub |
| Albert Fiorillo | Tim Kritter | Susan Supanich |
| Jane Fiorillo | Lisa Ruth Krueger | Sandy Thompson Midtlien |
| Mike Flaherty | Kevin Lentz | John Ver Kuilen |
| Mark Gehring | Rick Luther | Darcy Yates |
| Bob Gorsuch | Randy McVean | |

RIDE  TO CURE DIABETES



dedicated to finding a cure

Congratulations to those who completed the La Crosse Ride in August. Good luck to our Death Valley riders in October.



Spring Gala a Huge Success!

On Saturday, April 24, 585 guests and 100 volunteers joined the Western Wisconsin Chapter for its Spring Gala, *Let the Dream Take Flight*, at Monona Terrace and Convention Center. Thanks to the hard work and generosity of our donors, sponsors, volunteers and committee, a record-breaking \$320,000 was raised for diabetes research. Amy Eager, Jenny

Sheahan and Kathy Zander served as Gala chairs.

The Living and Giving Award was presented to Honorees Jeanne and Tom Grist for their outstanding efforts to raise funds and awareness for type 1 diabetes. Eight-year-old Alexis Mast and her father, Jon, were our Fund A Cure speakers. Their poignant and compassionate story of living with type 1 diabetes helped raise

\$130,000 through Fund A Cure, including \$6,000 raised by Madison Fire Fighters Local 311 in honor of the Mast Family.

WKOW's Diana Henry hosted the evening, which featured dinner, dancing, raffle and auctions. Steve Goldberg of CUNA Mutual Group and Chuck Whitman of Stokes Auction Group conducted the Live Auction and Fund A Cure. ●

Let the Dream take Flight



Jeanne and Tom Grist



The Mast Family



Save the Date

2011 Spring Gala
Saturday, April 2
Monona Terrace, Madison



Thank You to the Following Corporate Partners; Without Your Support, This Event Would Not Be Possible

Diamond Research Sponsors

American Family Insurance
Andiamo Productions
CPM Marketing Group
CUNA Mutual Group
Dean Health Plan
Park Printing House, Ltd.
Physicians Plus Insurance Company/
Meriter Health Services
Total Awards & Promotions/AwardsMall.com
UW Department of Radiology
UW Health

Cocktail Hour Sponsor

Wisconsin Fertility Institute

Gold Research Sponsors

Chalmer's Jewelers
M&I Bank
Melius, Schurr & Cardwell
Union Bank & Trust Company

Silver Research Sponsors

Ameritas Group Dental & Eye Care
Boardman Law Firm
Baker Tilly
Clasen Quality Coatings, Inc.
eflexgroup.com
Fire Fighters Local 311
Foley & Lardner LLP
Group Health Cooperative
Growth Catalysts, Inc.

Merrill Lynch/Chris Tierney
Naviant, Inc.
Novo Nordisk
Oak Bank
The Odorico Family
The Payroll Company
Quarles & Brady LLP
SVA Certified Public Accountants
TJK DesignBuild
UW Department of Pediatrics
UW Department of Surgery
UW Division of General Surgery
UW Division of Transplantation
UW Division of Vascular Surgery
Warner & Warner, Inc.

We've Moved!

After a decade in our building on Big Sky Drive, the Western Wisconsin Chapter is moving to a larger office that can better accommodate our staff and volunteers. We will still be located on the west side of Madison and our phone number will remain the same. As of Sept. 1, our new address will be:

JDRF
Western Wisconsin Chapter
434 S. Yellowstone Drive
Suite 202
Madison, WI 53719

JDRF Research Update *Thursday, Oct. 21*

Please save the date of Thursday, Oct. 21, when we welcome **Tom Brobson** to Madison to speak about JDRF's cutting edge research and development activities. Tom is the director, Global Research Communications for JDRF and serves on a number of working groups and committees including the Artificial Pancreas Task Force, Medical Affairs Committee for JDRF's Clinical Trials Connection service, and the Research Communications working group. Tom lives with type 1 diabetes and is participant in research studies to develop an artificial pancreas.

The Research Update will be held at Promega in Fitchburg. The exact timing is still being determined, but there will be a brief evening reception followed by Tom's lecture. We encourage everyone to attend and learn how your dollars and time translates into research for the cure.

Board Member Announcements

Elections to the Western Wisconsin Board of Directors were conducted at the Annual Meeting on June 23. We welcome the following new board members that have been elected to a two-year term.

Mary Barman, RN
St. Mary's Hospital, Madison
Deb Davis
Community Volunteer, Middleton
Kristen Everett
Ken Vance Automotive, Eau Claire
Scott Kowalski
Physicians Plus
Insurance Corporation, Madison
Mark Miller
Coating Tech Services, Eau Claire
Annette Mikat
Mikat Public Relations, La Crosse
Sarah Nehls, M.D.
University of Wisconsin
Hospitals and Clinics, Madison
Beth Van Den Lagenberg, ARNP
American Family
Children's Hospital, Madison

In addition, the Board of Directors elected the following people to officer positions:

Bobbi Howell, President
Douglas Berry, CPA, President Elect
Ron Parton, M.D., Past President
Dan Rotert, Past President
Tom Sheahan, Treasurer
Mike Wokasch, Secretary
Eric Hallick,
VP Program Development
Kevin Lentz, VP Strategic Planning
Allan Wearing, VP Communications
Mark Miller, Advocacy Team Chair
Rory Hemp Boll, Nominating Chair
Amy Eager, Outreach Chair
John Ronzia, Major Donor Chair
Mary Westrick, Ph.D.,
Research Information Volunteer

The Western Wisconsin Chapter thanks the following retiring Board Members for their service to JDRF:

Jim Lazarz, 6 years service
Sharon McIlquham, 6 years service
Jon Nordenberg, 6 years service
Tracy Bekx, M.D., 4 years service
Elizabeth Pritts, M.D.,
2 years service
Gabby Cezar, DVM, Ph.D.,
2 years service

Five New Planned Gifts Secured Through The Legacy Challenge

Last year, JDRF launched a pilot fundraising program, The Legacy Challenge, to encourage donors to include JDRF in their charitable or estate plans by enlisting sponsors who were willing to make donations of \$1,000 for every commitment received. From Nov. 1, 2009 to May 31, 2010, The Legacy Challenge's innovative combination of planned giving with a matching gift component garnered a total of 128 planned gift commitments and raising \$128,000 from sponsors.

Jim Lazarz, planned giving advocate for Western Wisconsin, led our chapter's success in securing five new planned gifts through The Legacy Challenge. Thank you to everyone who contributed to this program, as well as all members of the Chapter's BETA Society. ●

Anonymous (2)
Ray and Sue Brunner
John Daniels
James and Roberta Lazarz
Teresa and Kevin Lentz

Jon Nordenberg
Ruth and Kevin Shelly
Jenny and Tom Sheahan
Irene and John Ronzia
Allan Wearing



Retail Partners Support JDRF With Amazing Fall Programs

Retail stores have a long history of supporting JDRF. On a national and regional level, major chains such as Advance Auto Parts, Marshalls, Walgreens, The Fresh Market, Build-a-Bear Workshop and USA Drug have raised tens of millions of dollars for a cure. Sneaker sales and customized in-store events have become an integral part of the fall fundraising season.

JDRF is proud to announce that our remarkable retail partners will once again launch broad campaigns in the coming months to raise funds for diabetes research.

Advance Auto Parts' 2010 Sneaker sales campaign will begin the week of Aug. 23 and run through the first week of October. The company led the charge in 2009



as JDRF's No. 1 overall corporate partner, with more than \$3.8 million raised. Advance Auto Parts was also JDRF's top retail partner for the second year in a row.

Marshalls will once again support JDRF through Sneaker sales from Aug. 22-Sept. 25. Marshalls is committed to making a difference in its communities, and nowhere was that more evident than in its 2009 campaign for JDRF, which brought in more than \$1.6 million.



Walgreens, with more than 7,500 stores in the U.S. and Puerto Rico, is a powerhouse fundraiser for JDRF. The company has delivered more than \$1 million in fundraising annually for the past decade, thanks to its "Give \$1, Get \$1" campaign, employee contributions, and support of JDRF's Walk to Cure Diabetes.



The Fresh Market is another wonderful company partnering with JDRF in the search for a cure. The Fresh Market will host its unique "Sidewalk Sale" program benefitting JDRF from Sept. 10-13, and will sell the Sneakers in 100 locations nationwide from Aug. 27-Sept. 13. In addition, Wine Gala events will be held in select markets this fall.



Build-a-Bear Workshop made a big impact on JDRF fundraising in 2009, with over \$210,000 delivered through an innovative "pin-pad" donation program at checkout counters during National Diabetes Awareness Month. In November, the company will once again support JDRF with this program in more than 300 retail outlets throughout the U.S. and Canada.

USA Drug will once again support JDRF with Sneaker sales in all stores from Oct. 1-31. USA Drug operates stores under multiple banners – including May's, Super D, Med X and Drug Warehouse – in a number of states: Arkansas, Kansas, Mississippi, Oklahoma, Tennessee and Missouri. The company's support of JDRF with Sneaker sales in all locations in 2009 delivered over \$100,000 in funding.



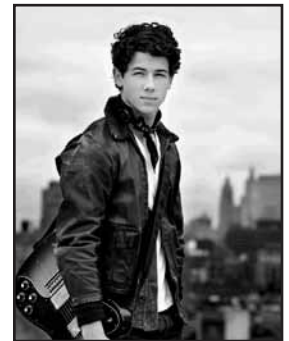
Thank you for your continuing support of these enormously important JDRF retail partners! And remember that when you are in any of these establishments, be sure to thank the associates for their support of JDRF and research toward a cure. ●

Nick Jonas to Chair JDRF's Walk to Cure Diabetes

Nick Jonas, one-third of the Grammy-nominated, multi-platinum group the Jonas Brothers, will be the new national chair of JDRF's Walk to Cure Diabetes – the foundation's largest fundraising program.

Nearly 500,000 people took part in JDRF Walks last year, raising some \$75 million.

For JDRF's Walks, Nick will be leading the charge to raise funds for



Nick Jonas

research for better treatments and a cure for type 1 diabetes. The 17-year-old, who was diagnosed with type 1 diabetes at age 13, will lend his name, image and efforts to help JDRF increase participation and fundraising in the more than 200 Walks held worldwide.

"As a person living day-to-day with diabetes and recognizing the tremendous contribution JDRF has done for our community, I couldn't be more honored to serve as the national chair for the Walk to Cure Diabetes," he says.

As chair, Nick will be featured in JDRF Walk materials, taking part in promotional videos and television public service announcements.

To view the JDRF Walk video featuring Nick, or to register for a Walk, please visit <http://walk.jdrf.org/> or call (800) 533-CURE.

In addition to his role with the JDRF Walk, Nick helped to raise diabetes awareness through a partnership with Bayer Diabetes Care. Bayer and Nick announced a contest called "Give Back. Simply Win." that encouraged people with diabetes to share their stories about giving back, and rewarded them for their charitable efforts. For more information, please visit www.nickssimplewins.com. ●

JDRF Hosts Key Session on Artificial Pancreas Progress at ADA Scientific Meeting

In an acknowledgement of its leadership in driving the development of an artificial pancreas, JDRF was asked to co-host a special symposium on the dramatic progress in automating diabetes control at this year's American Diabetes Association Scientific Sessions. The ADA meeting is a key annual gathering for diabetes researchers worldwide, and the joint JDRF-ADA symposium underscored the partnerships JDRF is forging to bring new treatments and cures to people with type 1 diabetes.

In joining forces with JDRF to host the symposium, the ADA recognized the importance of promoting JDRF's research leading to an artificial pancreas, and of raising awareness about the science now underway. The ADA noted that artificial pancreas technologies could not only significantly improve the lives of people with type 1 diabetes, but could also have a major impact on those with type 2 who are insulin-dependent, a key part of the ADA's constituency.

"This joint symposium highlights how major organizations working together can move these technologies forward," said Richard Bergenstal, M.D., executive director of the International Diabetes Center and the ADA's president, Medicine and Science. "It's going to require collaboration between many different organizations to come together to tackle this problem."

JDRF was happy to have the opportunity to outline the progress of its Artificial Pancreas Project to the larger diabetes research community.

"It's very exciting to work together to help people with diabetes achieve their outcomes," said Aaron Kowalski, Ph.D., who directs JDRF's Artificial Pancreas Project. "We're all interested in people with diabetes achieving better glucose control. The community needs to hear what's happening and where we are headed."

At the symposium – "The Artificial Pancreas: A Goal within Reach?" – JDRF-funded researchers announced new, previously unpublished findings that further underscore the potential for the artificial pancreas to improve the lives of people with diabetes. The speakers predicted that early-generation artificial pancreas technology could become commercially available within a matter of years.

In the first study, an artificial pancreas system improved overnight glucose control across a range of "real-life situations" in adults – and did so without increasing the risk of dangerously low blood sugar. The findings were presented by Roman Hovorka, Ph.D., principal research associate at the University of Cambridge Metabolic Research Laboratories. Dr. Hovorka has been a key member of JDRF's Artificial Pancreas Project since the program's launch.

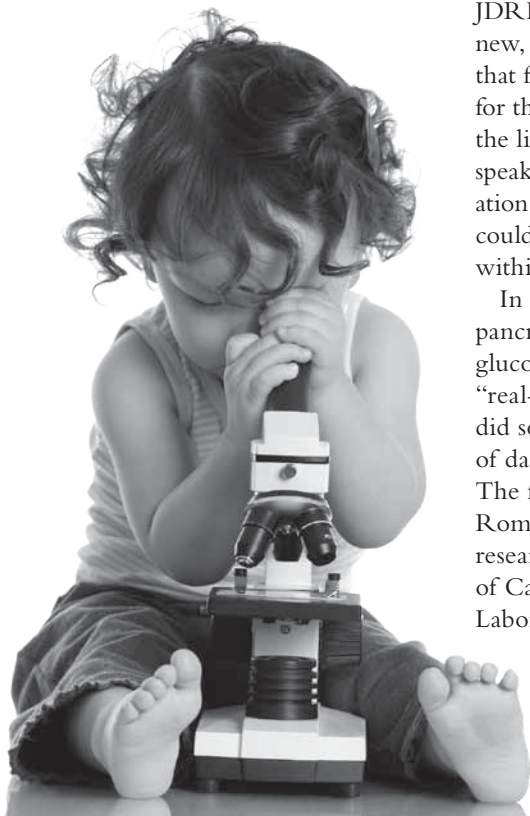
By using an artificial pancreas system, adults in

the study spent 70 percent of the time overnight within a target blood glucose range, compared with only 47 percent of the time without using an artificial pancreas. To demonstrate the real-life benefits of artificial pancreas technology, the study showed that these benefits remained consistent even after adults ate a large meal and drank a glass of white wine before bedtime. As in the other studies, dangerously low blood sugar (hypoglycemia) was reduced, even though alcohol is known to increase the risk of nighttime hypoglycemia for people with diabetes.

A second study helped to identify the "psychosocial characteristics" of people with type 1 diabetes, in order to show those most likely to successfully use continuous glucose monitoring (CGM) devices, an important component of an artificial pancreas system. This data, presented by Marilyn Ritholz, Ph.D, senior psychologist at the Joslin Diabetes Center and assistant professor at Harvard Medical School, will help physicians and other diabetes care providers to identify patients that the new devices are most likely to benefit.

The Joslin Center research found that the people most likely to achieve good results with the technology included those who used problem-solving skills for coping with frustration and anger, who saw CGM as a way to better understand their diabetes, or who had good support from family members. Those less likely to benefit included people who had anger and impulse control issues, failed to synthesize the data from CGM, and didn't have good support.

A number of other JDRF-related studies and announcements were made in conjunction with the ADA sessions. For more information about the studies and the symposium, please visit the Artificial Pancreas Project website at www.artificialpancreasproject.com.



Jeffrey Brewer Named JDRF's President and CEO

At the June meeting of JDRF's International Board of Directors, Jeffrey Brewer was named JDRF's president and chief executive officer.

Mr. Brewer, an entrepreneur and philanthropist, has been a passionate JDRF volunteer and donor for the past eight years, playing a key leadership role in the foundation's research activities, especially the JDRF Artificial Pancreas Project. He became involved with JDRF soon after his son, Sean, was diagnosed with type 1 diabetes in 2002.

He has served as a director on JDRF's International Board since 2004, is a reviewer on the Lay Review Committee, and has been an active member of the New York Chapter.

Mr. Brewer is the founder and a former senior executive of two successful Internet businesses: Overture Services, which was acquired by Yahoo, where he served as CEO; and CitySearch, which is now a division of USA Interactive, where he was chief technology officer. Since 2003, Mr. Brewer has served as executive chairman of Kickstart International, an award-winning non-profit organization providing poverty-stricken populations, primarily in Africa, with a revolutionary approach to becoming self-sufficient.

"I feel we are on the cusp of exciting research progress that can make a real difference in the lives of people living with this terrible disease – including some tangible advances delivered to patients in the not-too-distant future," Mr. Brewer said. "I'm honored to become a full-time part of driving us toward our goals, and helping us translate research into drugs and devices that will help people with type 1 diabetes live better, longer and healthier, and ultimately to remove this disease from people's lives forever."



Jeffrey Brewer

Medtronic Turns Banners Into Bucks for JDRF

JDRF's social networking site, Juvenation.com, is the largest online social network for people with type 1 diabetes. In the past year, Medtronic has given Juvenation members a chance to win a continuous glucose monitor (CGM) through a contest they sponsored. Thousands of Juvenation members signed up. The promotion ended up being a fundraising bonanza for diabetes research.

Winners of the drawing had the option of either taking the CGM, or having Medtronic make a \$500 donation to JDRF. So many chose the latter option, that this spring, Medtronic presented JDRF with a check for \$25,000 as a result of the campaign.

Visit Medtronic at www.minimed.com to learn more.

Another 'Promise' Kept With Unprecedented Success

JDRF's 2010 Promise to Remember Me Campaign – in which the JDRF family asks members of Congress to support type 1 research funding – was the most successful yet.

From last August to May 1, a total of 431 meetings with senators and representatives were set up through the campaign – well over the target of 400 meetings.

The Promise Campaign runs every other year, with the goal of having as many meetings as possible between JDRF advocates and members of Congress in their local districts.

In this year's Promise Campaign, adults and children told their stories to legislators with passion. The focus of those meetings was the renewal of the Special Diabetes Program (SDP), which provides funding of \$150 million a year for type 1 diabetes research. The program, representing more than a third of all federal type 1 research funding, is set to expire at the end of September 2011. JDRF is working

to convince Congress to renew the SDP, and to do so in enough time to avoid the National Institutes of Health's having to scale back or halt the vital studies and clinical trials that the SDP funds.

As a result, wide support has been secured for renewing the SDP: so far, 61 senators and 281 representatives have signed on to co-sponsor legislation that will extend the SDP for five years.

You can get more details by visiting the campaign's Promise Blog (<http://promise.jdrf.org/blog/>) and/or homepage (<http://promise.jdrf.org/default.aspx>). You can also visit the JDRF advocacy Facebook page (www.facebook.com/JDRFAdvocacy) and/or Twitter page (www.twitter.com/jdrfadvocacy) for info on other JDRF advocacy opportunities. ●

PROMISE TO REMEMBER ME 

Message From the Chapter President

(continued from page 2)

Please contact the Chapter office if you are interested in any of these opportunities or if you have other ideas about how you'd like to get involved.

Each of you is an important part of the Western Wisconsin team! On behalf of the Board of Directors, thank you for all you do. Together, we will find the cure to type 1 diabetes and its complications.

Bobbi Howell

Board President



dedicated to finding a cure

Juvenile Diabetes Research Foundation
Western Wisconsin Chapter
434 S. Yellowstone Drive
Suite 202
Madison, WI 53719

ADDRESS SERVICE REQUESTED

(608) 833-2873; Fax (608) 833-9214
www.jdrfwesternwisconsin.org

Dated Material Inside

© 2010 Trozzolo.com

NONPROFIT ORG.
U.S. POSTAGE
PAID
IMS, INC.
64012

JDRF Support Services

JDRF's Outreach Program offers personalized support to families and adults living with type 1 diabetes. Our goal is to provide information and resources about type 1 diabetes, diabetes research and how best to manage and cope with this disease during each new phase of life.

Mentor Program

JDRF can connect you with another family or adult facing life circumstances similar to yours. Our family and adult mentors are volunteers who can share their personal experiences, answer non-medical questions and most importantly, lend valuable, specialized support when you need it most.

Networking Group Meetings

Volunteer-led meetings give all people affected by type 1 diabetes a chance to meet one another, share their wisdom with the newly diagnosed families, make new friends and learn from one another. Groups currently meet in Madison, Middleton and Baraboo.

Adult Type 1 Toolkit

Written by adults who have type 1 diabetes, the Toolkit is an essential "how-to" guidebook about living with the disease. It offers information and advice on important topics, such as how to deal with the diagnosis and day-to-day management of diabetes, how to tell friends about the disease, and how to juggle the demands of diabetes at work.

The toolkit can be downloaded free at www.jdrf.org/adults.

School Advisory Toolkit

JDRF has developed a number of innovative programs and materials to assist parents and school personnel in working together on behalf of students with diabetes in a respectful and mutually beneficial manner. The toolkit can be downloaded free at www.jdrf.org/satrequest.

Online Diabetes Support Team (ODST)

E-mail is often the most convenient way for people to communicate with one another, so JDRF also offers online support. The ODST is made up of many compassionate volunteers who know firsthand the ever-changing demands of living with type 1 diabetes. To reach out to the ODST, visit our website at www.jdrf.org/diabetessupport and fill out the brief request form.

Bag of Hope

For the newly diagnosed, we offer the Bag of Hope, a free bag filled with a comprehensive collection of educational and support materials. These materials include Rufus, the bear with diabetes, a blood sugar meter, a carbohydrate-counting tool, books, videos and more.

Pen Pals

For children and teens ages 4 to 18, JDRF offers an immensely popular

online pen pals program through our kids website, <http://kids.jdrf.org>. Kids can go to the site and browse for pen pals by age, or upload their own profiles and pictures so that others can find them. Even family and friends can participate.

Juvenation.org

Juvenation is the newest and largest type 1-specific social networking website! The site offers a variety of groups and forums categorized by topic. You can even start your own group. It is a great place to make connections with people like you.

Clinical Trials Connection

Participating in a clinical trial is the most personal way you can help find a cure for type 1 diabetes and its complications. The Registry provides a customized search based on personalized criteria of a database of hundreds of clinical trials that are enrolling patients. You can also get a monthly e-mail from the Registry that has up-to-date information about newly launched trials that you could be eligible for. Sign up and learn more at www.trials.jdrf.org.

Until there is a cure, JDRF can provide information and support to help families cope with the burdens type 1 diabetes imposes. For more information about any of these programs, contact **Amy Eager, Outreach chair, at acemusic@eishome.com**. ●